



Pavestech PST Limited

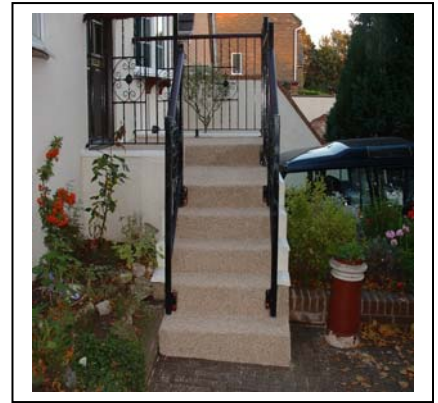
Pavestech Product Data Sheet

Number PPDS/029

Issue 2 - January 2008

Decratop

Decratop is a non slip, decorative resin bonded surfacing system for application to hard outside surfaces such as asphalt, concrete and steel.



For further information or a site survey and quotation, contact Pavestech at:

Hunster Lodge, Stripe Road, Doncaster, DN11 0DD

Tel. 08456 44 70 33
Email enquiries@pavestech.com

1. Product Description

Decratop

Pavestech's Decratop is a durable, hardwearing, slip resistant, decorative surface treatment, which, can be applied to any sound surface.

Decratop uses a patented three component urethane resin system specially formulated for aggregate surfacing and binding applications.

When cured the resin retains some flexibility and can therefore absorb energy and stress relax which gives it a high degree of durability in heavily trafficked situations.

Decratop can be supplied in buff, terra cotta, red, olive green, bright green, yellow, blue, grey and black, with other colours available to special order.

Decratop does not require a primer on concrete or bituminous substrates, will tolerate damp conditions during application and will cure at low temperatures. (4hrs @ 3°C - 1hr @ 30°C)

Substrates to which the Decratop product can be applied include: -

- Concrete
- Stone
- Brick
- Blockwork (Building Blocks and Block Paving)
- Bituminous Materials (Asphalt, Tarmac, Macadam)
- Wood
- Steel (excluding stainless)



2. Materials Guide

There are only two materials involved in Pavestech's Decrapave.

- a) Aggregate
- b) Resin Binder

a) Aggregate

The aggregate will generally be chosen primarily for its aesthetics, but slip resistance - gained from a high PSV, or kinder fall impact from smooth particles may also be important, depending on the exact nature of the area being treated and the traffic which will use it.

Areas which will have vehicular traffic will normally require 1-3mm aggregate and areas which are only to be used by foot traffic will usually use 1mm aggregate.

Commonly used aggregates are Chinese and Guyanan Bauxite as these both provide a very high skid resistance compared to other aggregates, but there are also several high PSV natural red, green and grey aggregates available in the UK.

b) Resin

Pavestech's Decratop uses a highly modified three component urethane system specially formulated for surfacing and binding applications.

The resin technology is such that the moisture intolerance usually a problem to resins has been largely overcome. This system can be used on damp and green concrete and is more tolerant of moisture on bituminous surfaces.

When cured the resin retains some flexibility and can therefore absorb energy and stress relax which gives it a high degree of durability in heavily trafficked situations.

It is cold applied and cures within acceptable timescales even at low ambient temperatures.

3. Health & Safety

Full COSHH information will be available on site and accompany any materials when delivered.

Only trained operatives are used to apply the products.

As the resins are water based no hazardous vapours or odours are emitted during the application.

4. Site Preparation

The substrate to which a decorative finish is to be applied should be clean, free of any loose or friable material and preferably dry, but certainly to the extent that moisture does not glisten on the surface.

Cementitious substrates which have a lot of laitance or are contaminated and new asphalt surfaces which have a lot of bitumen binder on the surface should first be prepared by HVIM or fully enclosed blasting. As with the application of any resin to any surface good preparation will greatly improve the result and long term durability.

5. Maintenance

Pavestech's Decratop is a tough durable product and little or no maintenance is required. Should the surface become contaminated it can be cleaned by normal pressure washing, if heavily contaminated by spillage or damaged contact Pavestech for advice.

6. Patching & Repair

In the event the surface has had to be dug up for utility repairs or trenched installations the area can be patched to blend it back in with the original surface. If bright synthetic colours are involved there will of course be a difference in shade until the new weathers in.

7. Site Survey & Samples

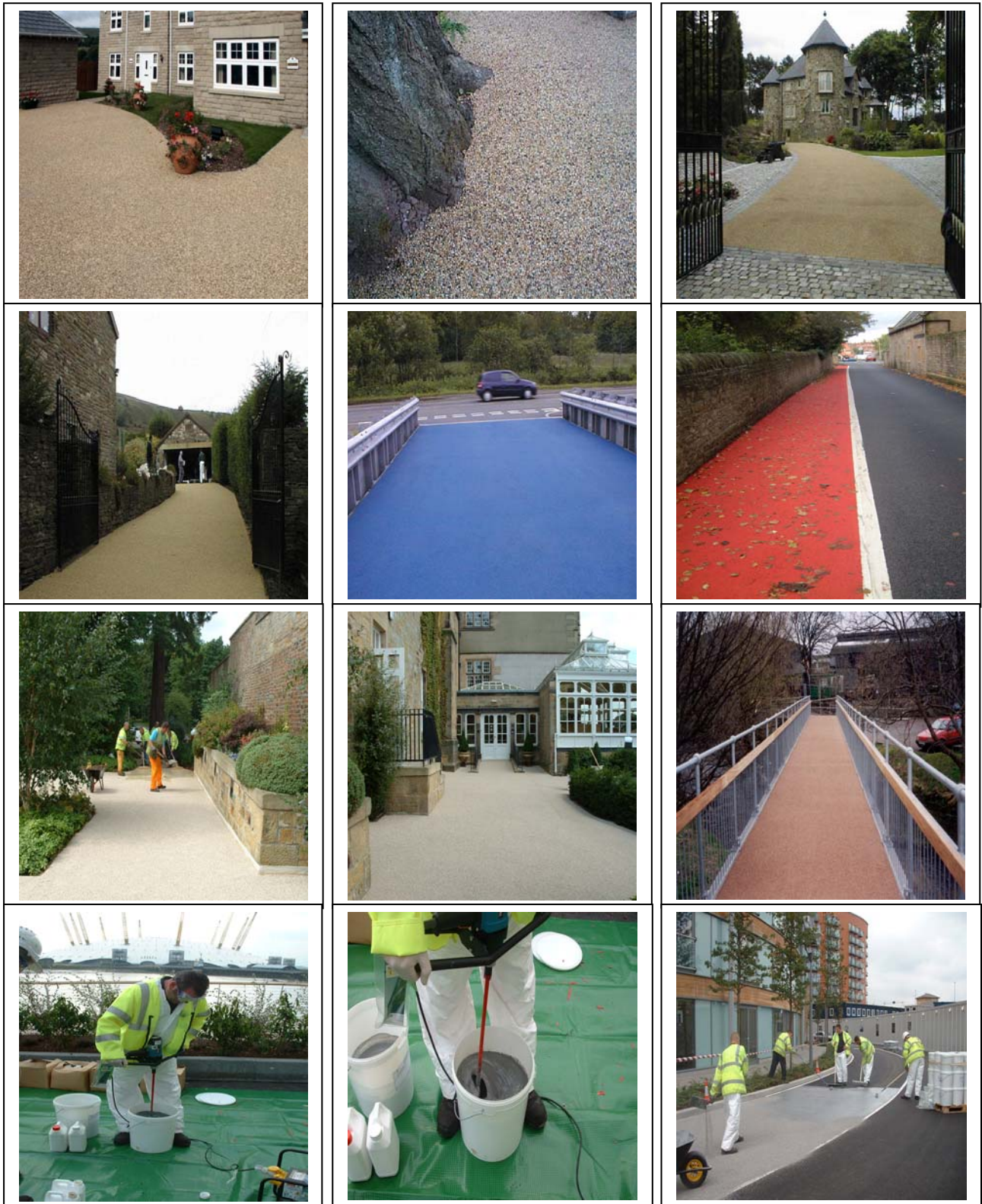
Site surveys are always carried out prior to any quotation for application to existing surfaces.

Specifications can be provided for suitable base course materials and the finish required in the case of new build and restoration situations.

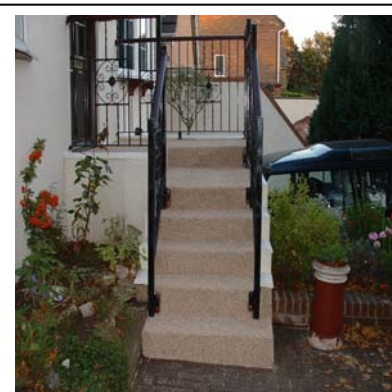
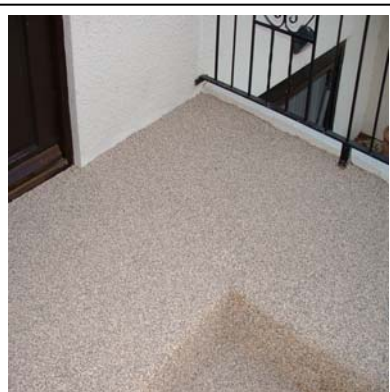
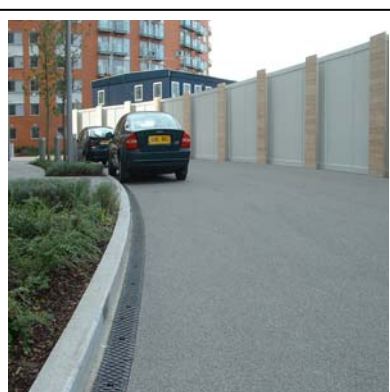
Sample panels can be prepared for inspection and approval purposes.

Trial / Test areas can be laid if required, this service is chargeable at cost but will be deducted from the final account when a purchase is made.

7. Picture Gallery



Picture Gallery cont.



For further information
A site survey or a
quotation, email your
request to:

Enquiries@pavestech.com

Or

Tel. 08456 44 70 33